

## COLLEGE AND UNIVERSITY ACCEPTANCES FOR 2018 GRADUATES

The University of Alabama	Massachusetts College of Art and Design
American International College	Massachusetts College of Liberal Arts
American University	Mass. College of Pharmacy & Health Sciences
Anna Maria College	University of Massachusetts Dartmouth
Arizona State University	University of Massachusetts, Amherst
The University of Arizona	University of Massachusetts, Boston
Art Center College of Design	University of Massachusetts, Lowell
Assumption College	Merrimack College
Auburn University	Metropolitan State University of Denver
Babson College	Middlebury College
Bard College	New England College
Bay Path University	University of New Hampshire at Durham
Becker College	University of New Haven
Bentley University	New York University
Berry College	Newbury College
Boston College	Nichols College
Boston University	Northeast Maritime Institute
Brandeis University	Northeastern University
Bridgewater State University	Northern Vermont University
Bristol Community College	Notre Dame College of Ohio
Bryant University	Oberlin Conservatory of Music
Bucknell University	Otis College of Art and Design
Bunker Hill Community College	Pennsylvania State University
California College of the Arts	University of Pennsylvania
California State University, Los Angeles	Plymouth State University
University of California, Santa Cruz	Providence College
Cape Cod Community College	Rensselaer Polytechnic Institute
Castleton University	University of Rhode Island
Champlain College	Ringling College of Art and Design
College of Charleston	Rochester Institute of Technology
Coastal Carolina University	University of Rochester
Colby-Sawyer College	Roger Williams University
University of Colorado at Boulder	Sacred Heart University
University of Colorado at Denver	Saint Anselm College
Colorado State University	Saint Michael's College
Columbia University	Salem State University
Connecticut College	Salve Regina University
University of Connecticut	University of San Diego
Curry College	University of San Francisco
Dean College	Santa Clara University
DePaul University	Savannah College of Art and Design
Drew University	Siena College
Drexel University	Simmons University
Eastman School of Music U of Rochester	Skidmore College
Eckerd College	University of South Carolina
Elon University	University of South Florida
Emerson College	Southern New Hampshire University
Emmanuel College	Springfield College
Emory University	St. John's University
Endicott College	St. Lawrence University
Fairfield University	Stanford University
Fitchburg State University	Stetson University
Florida Gulf Coast University	Stonehill College
Florida State University	Suffolk University
University of Florida	Syracuse University
Fordham University	The University of Tampa
Framingham State University	Temple University
Franklin University Switzerland	The New School
The George Washington University	The Ohio State University
Georgetown University	Trinity College
University of Georgia	Union College
Golf Academy of the Carolinas	United States Coast Guard Academy
Grinnell College	Unity College
Hampshire College	Universal Technical Institute
Harvard University	University of Vermont
IE University - Segovia	Villanova University
John Carroll University	Wellesley College
Johns Hopkins University	Wentworth Institute of Technology
Johnson & Wales University	Wesleyan University
Keene State College	Westfield State University
Laguna College of Art and Design	Wheaton College MA
Lasell College	Whittier College
Lesley University	Wittenberg University
Lincoln Technical Institute	Woodbury University
Long Island University, Brooklyn	Worcester Polytechnic Institute
Manhattanville College	Worcester State University



## Nantucket High School

10 Surfside Road  
Nantucket, MA 02554

## 2019 Class Profile

W. Michael Cozort, Superintendent  
John J. Buckley, Principal  
Jennifer Psaradelis, Assistant Principal  
Christopher L. Maury, Athletic Director

School Code: 221-465  
Member: New England Association of Schools & Colleges  
Telephone: 508.228.7280 Fax: 508.325.0254  
www.npsk.org

### COMMUNITY

Middle income; island community  
Population: 12,000—year-round

### SCHOOL

Comprehensive high school (Grades 9-12)  
Enrollment: 536

### FACULTY

Teaching faculty: 59  
Advanced degrees: 41  
Faculty/student ratio: 12:1

### GUIDANCE STAFF

Julia Chumak, School Counselor  
Courtney Foster, School Counselor  
Anita Small, School Counselor

### ADMISSION TESTING PROGRAM

Class of 2018:  
SAT—72% participated  
ACT—32% participated

### MEAN SAT SCORES

Class of 2018	
Evidence-Based Reading and Writing:	563
Math:	531
Writing and Language	15

### MEAN ACT SCORES

Class of 2018	
Composite:	23.6

### GRADUATION REQUIREMENTS

Each student in the Class of 2019 must earn a minimum of 26 credits, including:

English	4 credits
Mathematics	4 credits
Social Studies	3 credits
Science	3 credits
Physical Education	2 credits

### PROGRAM OFFERINGS

The academic year is divided into two semesters; however, the majority of courses are year-long. Nantucket High School is on a seven period rotating schedule where five to six periods meet each day plus an advisory block that meets twice a week.

**Advanced Placement** courses include: United States History, English Literature and Composition, English Language and Composition, Calculus AB, Biology, Chemistry, Statistics, Environmental Science, Spanish, Capstone Research, Studio Art.

**Honors** courses include: English, Social Studies, Science, Math, Foreign Languages, and Art.

**Culinary Arts Program** includes a two-year vocational program.

**Exhibitions** is an independent study program under the mentorship of faculty advisors.

**School to Career** provides opportunities for students to do apprenticeships with community businesses.

**Virtual High School** provides a wide variety of fully accredited online courses for students.

**Dual Enrollment** provides online courses through Cape Cod Community College where students can earn college credits.

**Community Service** (20 hours) is required for all students.

**Special Services** are provided for students with documented special needs and learning disabilities.

**Co-curricular activities** are offered through athletics, fine and performing arts, and special interest clubs and organizations.

**Innovation Pathways** is a healthcare and maritime college and career exploration program that provides students with internships, free early college enrollment, credential opportunities, a college & career prep class and wrap-around services to support students.

## NANTUCKET HIGH SCHOOL GUIDANCE DEPARTMENT

**PROFILE FOR CLASS OF 2018**  
September, 2014- June, 2018  
NUMBER OF STUDENTS (128 TOTAL)

### COURSE LEVELS

Courses are designated according to the level of difficulty as follows:

Advanced Placement (AP)  
Honors (H)  
College Prep (CP)  
Essentials (E)\*  
Basic (B)\*

\*Not included in GPA

### GRADE POINT AVERAGE

In order to account for the differing challenges and requirements at the various levels of instruction, the following "weights" are assigned in calculating Grade Point Average.

Grade	Advanced Placement	Honors	College Prep
A+	5.3	5.0	4.7
A	5.0	4.7	4.4
A-	4.7	4.4	4.1
B+	4.3	4.0	3.7
B	4.0	3.7	3.4
B-	3.7	3.4	3.1
C+	3.3	3.0	2.7
C	3.0	2.7	2.4
C-	2.7	2.4	2.1
D+	2.3	2.0	1.7
D	2.0	1.7	1.4
D-	1.7	1.4	1.1
F	0.0	0.0	0.0

### DISTRIBUTION OF WEIGHTED GPA 2017-2018 CLASS OF 2018:

Top Decile	4.98-4.41	6th Decile	3.33-3.14
2nd Decile	4.40-4.09	7th Decile	3.08-2.82
3rd Decile	4.07-3.72	8th Decile	2.81-2.60
4th Decile	3.71-3.52	9th Decile	2.58-2.30
5th Decile	3.51-3.34	10th Decile	2.27-1.71

### CO-CURRICULAR ACTIVITIES

Students are encouraged to participate in the wide variety of athletics, organizations, clubs, and performing ensembles.

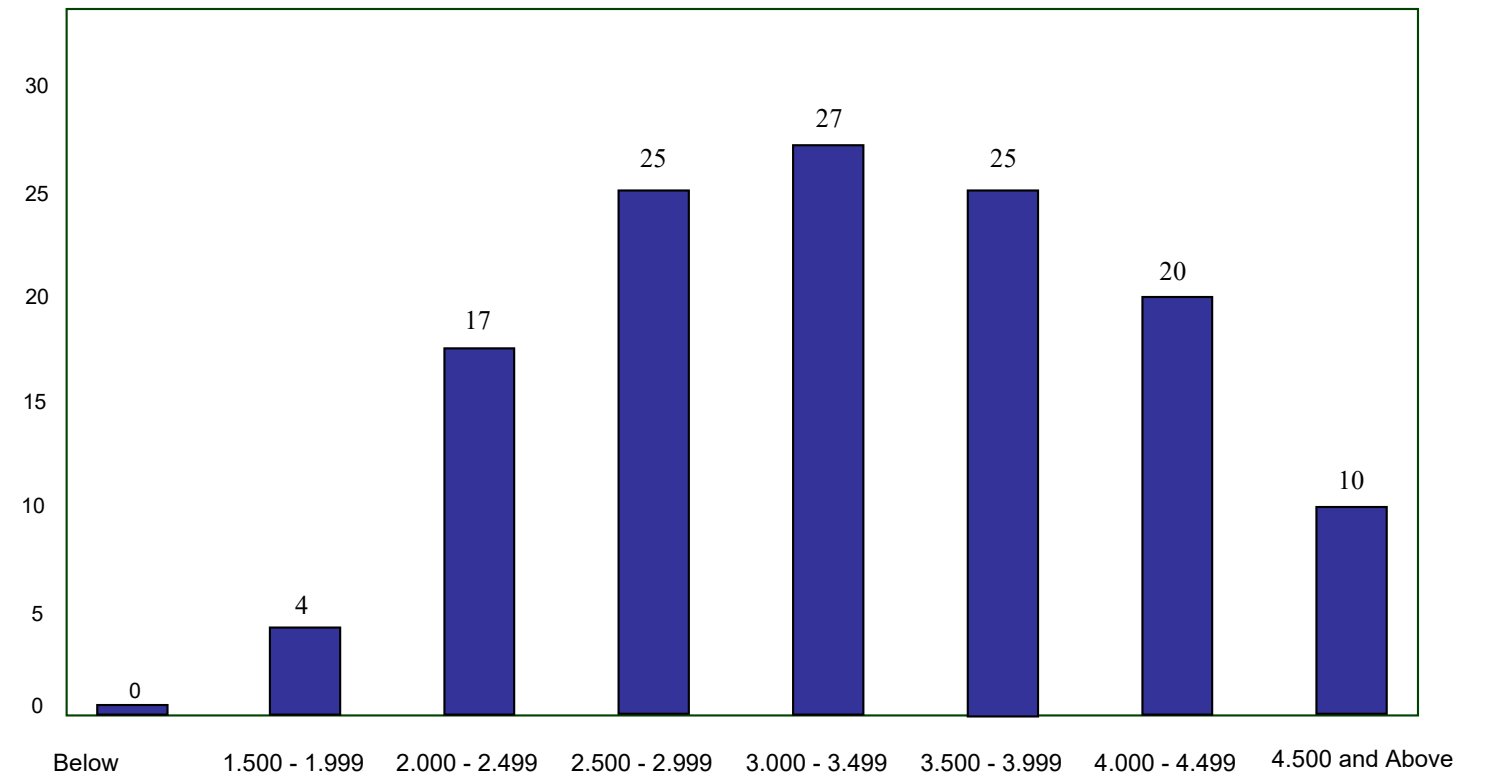
The following sports are offered:  
Soccer (boys and girls) Cheerleading, Field Hockey, Football, Basketball (boys and girls), Ice Hockey, Golf, Swimming and Diving (boys and girls), Baseball, Lacrosse (boys and girls), Girls Volleyball, Sailing, Softball, Tennis (boys and girls), and Cross Country (boys and girls).

Membership in the following clubs and organizations is available: Art Club, Breakfast Buddies, Chess Club, Chinese Club, Community Service, Culinary Club, Debate Club, Diversity Club, Drama Club, Environmental Club, Game Club, Gay/Straight Alliance, History Club, Intramural Club, Latin Club, Math Club, Meditation Club, National Honor Society, NHS Musical, Perfect Pals, Quiz Bowl, Science Fair, Select Chorus, Spanish Club, Student Council, Technology Club, Veritas (school newspaper), and Yearbook.

Performing arts groups include: Accidentals & Naturals (select chorus), Drama Club, and the annual musical.

### FUTURE PLANS Class of 2018

Higher Education	74%
Four-year College/University	66%
Two-year College/University	5%
Career Education	2%
Army	1%
Employment/Other	26%



### WEIGHTED GRADE POINT AVERAGE

Example of  
Table of Weights  
Computing the Weighted G.P.A.

Grade	College Prep	Honors	Advanced Placement
A+	4.7	5.0	5.3
A	4.4	4.7	5.0
A-	4.1	4.4	4.7
B+	3.7	4.0	4.3

1. Multiply the value of the grade by the credit value of the course.
2. Divide the total of #1 by the total credits of courses.
3. The result is the weighted G.P.A. of courses for grades 10-11 inclusive.

Please note: Only courses designated as College Prep (CP), Honors(H), or Advanced Placement (AP) are used in calculating GPAs.