



Elizabeth Hallett, Ed.D.
Superintendent

Nantucket Public Schools



www.npsk.org
hallette@npsk.org

10 Surfside Road . Nantucket, MA 02554 . Phone: 508-228-7285 . Fax: 508-325-5318

MEMORANDUM

TO: All NPS Families
RE: **PHASE 2 Roadwork on Surfside Road with Impact to After School Pick-Up**
Dates: October 23, 2024 through October 30, 2024 (**tentative end date*)
From: Beth Hallett (NPS Superintendent) and all NPS Administration

Surfside Road construction and road closures will continue in the upcoming weeks. Phase 1 is now complete, and **Phase 2 begins tomorrow, Wednesday, October 23**. This will continue to impact student dismissal, but there will be minimal changes for parent pick up and bus dismissal.

As a reminder, the construction will be completed in four (4) phases, and each phase will impact various aspects of the dismissal process. Phase 2 is outlined in groups on the following page for your convenience; it also shows how different groups might be impacted by road closures and rerouting. \

Please make sure to review this and future communications completely; for the safety of our students, please make sure that you follow the directions for your group. It will be important that we all work together to ensure that we are informed, flexible and responsible for each phase.

During all phases, the traffic flow will be impacted; therefore, **parents picking up students should not queue before 2:00 pm.**

PLEASE NOTE: MORNING DROP OFF WILL NOT BE AFFECTED!

Thank you in advance for your patience and understanding as we navigate these phases together.



Elizabeth Hallett, Ed.D.
Superintendent

Nantucket Public Schools



www.npsk.org
hallette@npsk.org

10 Surfside Road . Nantucket, MA 02554 . Phone: 508-228-7285 . Fax: 508-325-5318

Phase 2: Start date: Wednesday, October 23, 2024

Location: **Surfside Road will be closed from First Way to Bartlett Road.**

NO THROUGH traffic on this section of Surfside Rd. from 8:30 am - 5:00 pm

CPS and NHS Front Entrances are now OPEN.

Group	Impact	Facility/Flagger Needs
NES/NIS Bus Drop-Off/Pick Up	Cross-Campus Roadway (no new impact, same as Phase 1)	N/A
NES/NIS Parent Drop-Off/Pick Up	No impact	N/A
CPS/NHS Bus Pick Up* (*Exception: Special Education bus - see below)	Cross-Campus Roadway (no new impact, same as Phase 1)	At Sparks Ave and CPS/NHS rear school entrance and at First way and CPS/NHS rear school entrance
CPS/NHS Parent Pick Up	Back of NHS/CPS only; no queueing before 2:00 pm	At Sparks Ave and CPS/NHS rear school entrance and at First way and CPS/NHS rear school entrance
CPS/NHS Special Education Bus Pick Up	Bus will pick up all special education students in front of CPS and NHS	N/A
Athletics Pick Up/Drop Off	Front or back of NHS/CPS or at Bacchus fields (no impact)	N/A
Nantucket Community School Program Attendees/Parents at NES or NIS	No Impact	N/A
Nantucket Community School Program Attendees/Parents at CPS or NHS	No impact - pool parking lot not affected; drop off in front of CPS/NHS can resume	N/A



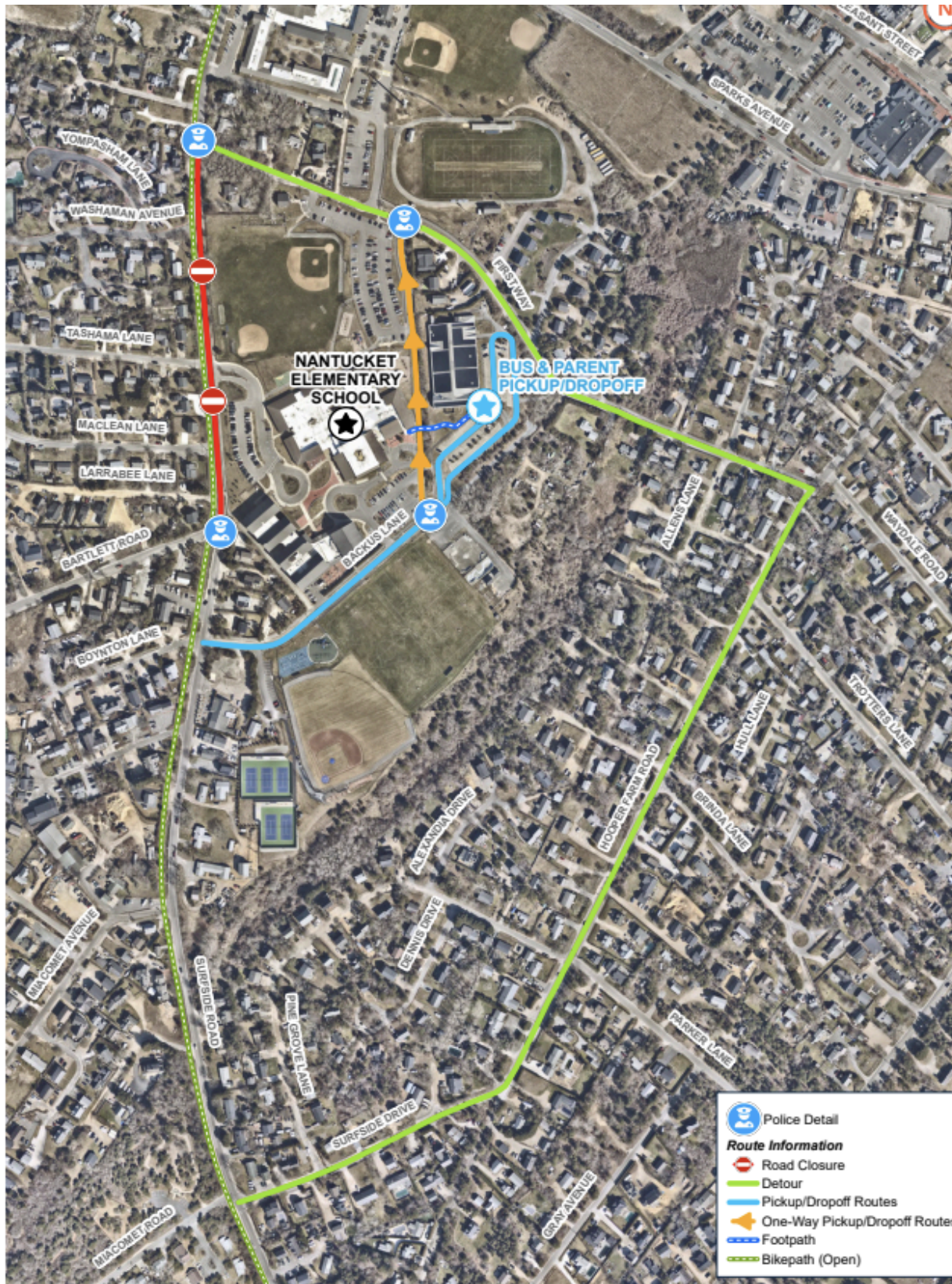
Nantucket Public Schools



Elizabeth Hallett, Ed.D.
Superintendent

www.npsk.org
hallette@npsk.org

10 Surfside Road . Nantucket, MA 02554 . Phone: 508-228-7285 . Fax: 508-325-5318





Nantucket Public Schools



Elizabeth Hallett, Ed.D.
Superintendent

www.npsk.org
hallette@npsk.org

10 Surfside Road . Nantucket, MA 02554 . Phone: 508-228-7285 . Fax: 508-325-5318

Phase 3: Start date: TBD

Location: ***Surfside Road closed from Bartlett Road to Miacomet Avenue.***

*A detailed description of Phase 3 will be provided **in advance of the start date.**

Phase 4: Start date: TBD

Location: ***Surfside Road is closed from Miacomet Avenue to Fairgrounds Road.***

*A detailed description of Phase 3 will be provided **in advance of the start date.**